

# WYEE STRUCTURE PLAN

## DISCUSSION PAPER – SUMMARY ON A PAGE

We are updating the Wyee structure plan to guide growth and change in Wyee over the next 20 years to ensure the best outcomes for current and future residents.

The discussion paper is the first step in creating the plan. It presents issues and opportunities for different precincts.

### WYEE IS GROWING



2021 **2,909** residents

BY 2046 **5,200** residents



**Vision:** Local centre offering diversity of land uses including housing, employment, recreation, conservation. Target dwelling density of 50 dwellings per hectare.

### WYEE INVESTIGATION PRECINCTS

Six precincts have been identified for investigation due to their potential to support future growth for housing, jobs, transport and infrastructure investment in a coordinated and sustainable way.

**1 – Wyee town centre:** well-connected, with a mix of residential and employment uses, supported by diverse services, recreation, and transport infrastructure

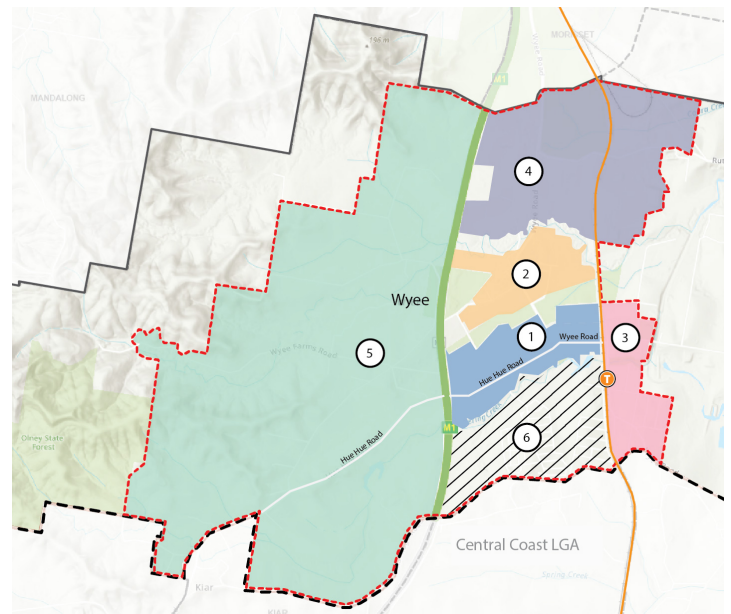
**2 – Wyee north:** provide additional housing and employment to support the Wyee town centre

**3 – Wyee train station:** higher-density housing near the train station, supported by diverse housing types, public open space, and improved transport options

**4 – North-east Wyee:** support regional industrial and agricultural employment, as well as maintaining biodiversity corridors

**5 – Wyee west:** future sporting facility co-located with nature-based recreation and rural tourism opportunities

**6 – Radcliffe estate & surrounds:** primary greenfield growth area with opportunities for further investigations



#### Legend

- LGA boundary
- Wyee suburb boundary
- Wyee structure plan boundary
- Train line
- Ⓣ Wyee train station
- Precinct 1 — Wyee town centre
- Precinct 2 — Wyee North
- Precinct 3 — Wyee train station
- Precinct 4 — North-East Wyee
- Precinct 5 — Wyee West
- /// Precinct 6 — Radcliffe estate and surrounds



We welcome the community to share their thoughts on the discussion paper before **14 January 2026**. Community feedback will help shape the development of the Plan.

[shape.lakemac.com.au/wyee-structure-plan](https://shape.lakemac.com.au/wyee-structure-plan) or view hard copy at Morisset library

